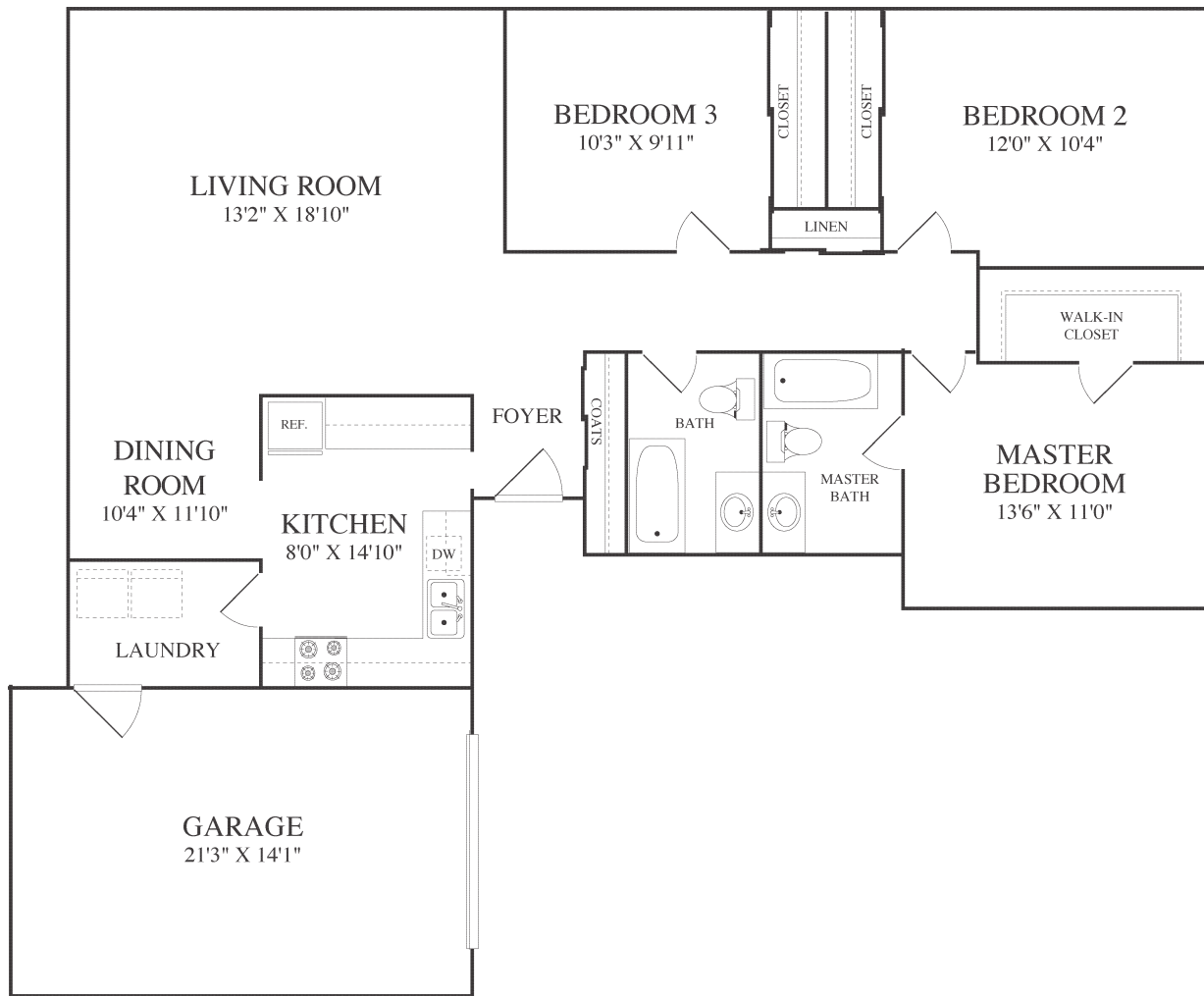


# SANTA CRUZ

3PM15

3 BEDROOM 2 BATH



Point Mugu District Office  
1530 Bullpup Circle, Point Mugu, CA 93041  
P. 805.986.0928 F. 805.986.0970

[WWW.LINCOLNMILITARY.COM](http://WWW.LINCOLNMILITARY.COM)

LINCOLN  
MILITARY  
HOUSING

Every Mission Begins at Home®



The square footage indicated is an approximation. The floor plans are conceptual and should not be used in making spatial decisions. Floor plans vary even for units with the same number of bedrooms. Once the Navy determines eligibility and total bedroom qualification, Lincoln Military Housing can not guarantee which floor plan type will be available for move-in.