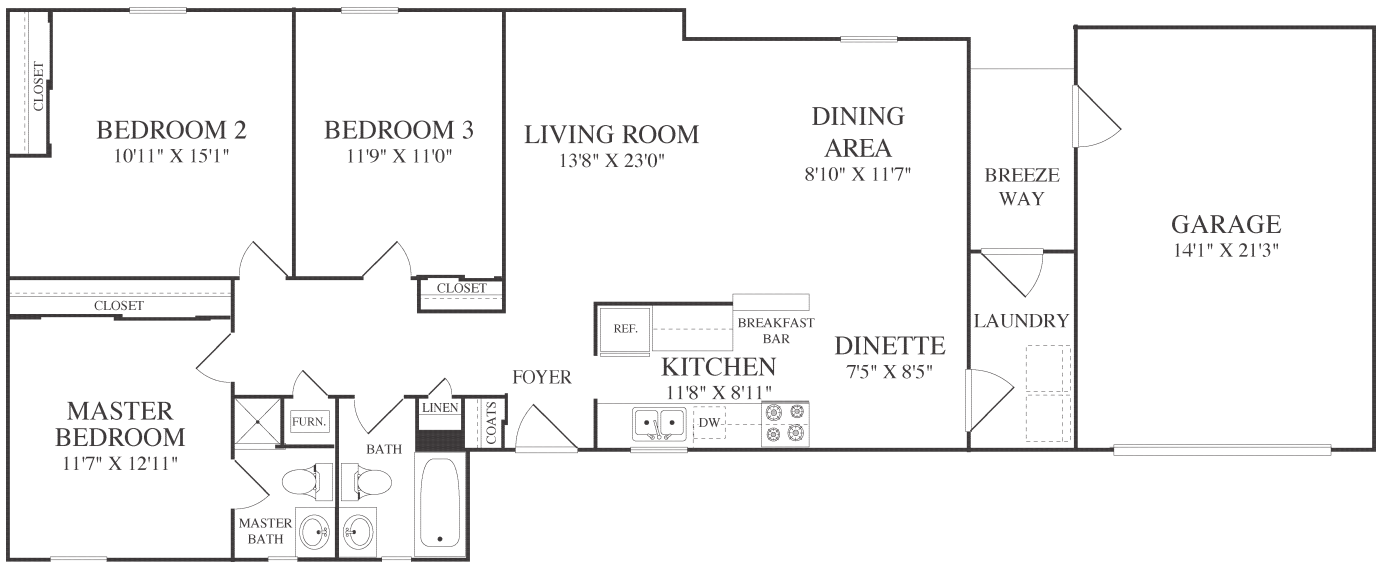


SANTA ROSA

3PM17

3 BEDROOM 2 BATH



Point Mugu District Office
1530 Bullpup Circle, Point Mugu, CA 93041
P. 805.986.0928 F. 805.986.0970

WWW.LINCOLNMILITARY.COM

LINCOLN
MILITARY
HOUSING

Every Mission Begins at Home[®]



The square footage indicated is an approximation. The floor plans are conceptual and should not be used in making spatial decisions. Floor plans vary even for units with the same number of bedrooms. Once the Navy determines eligibility and total bedroom qualification, Lincoln Military Housing can not guarantee which floor plan type will be available for move-in.