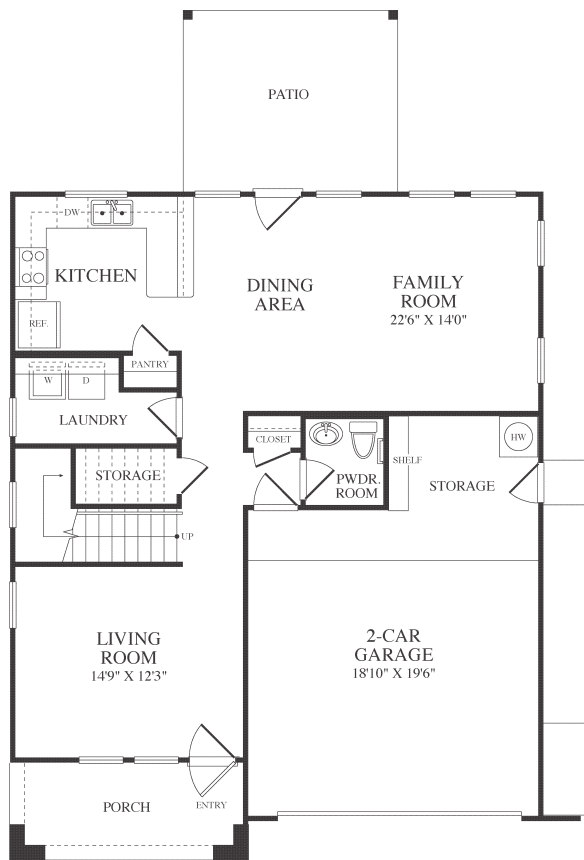


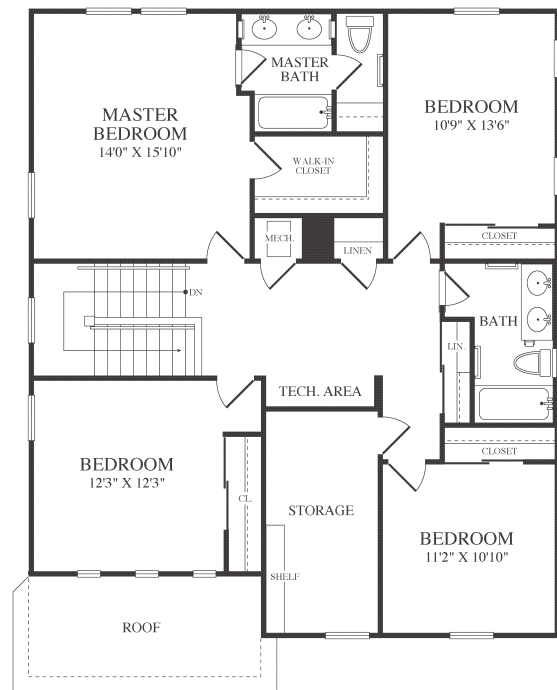
# SAN LUIS REY

## SLRD2.5B

2,243 SQ FT 4 BEDROOM 2.5 BATH



FIRST FLOOR



SECOND FLOOR

Mountain District Office  
MCB Camp Pendleton, 1201 Begonia Street, Oceanside, CA 92058  
P. 760.430.8476 F. 760.430.2150

[WWW.LINCOLNMILITARY.COM](http://WWW.LINCOLNMILITARY.COM)

LINCOLN  
MILITARY  
HOUSING

Every Mission Begins at Home®



The square footage indicated is an approximation. The floor plans are conceptual and should not be used in making spatial decisions. Floor plans vary even for units with the same number of bedrooms. Once the Navy determines eligibility and total bedroom qualification, Lincoln Military Housing can not guarantee which floor plan type will be available for move-in.